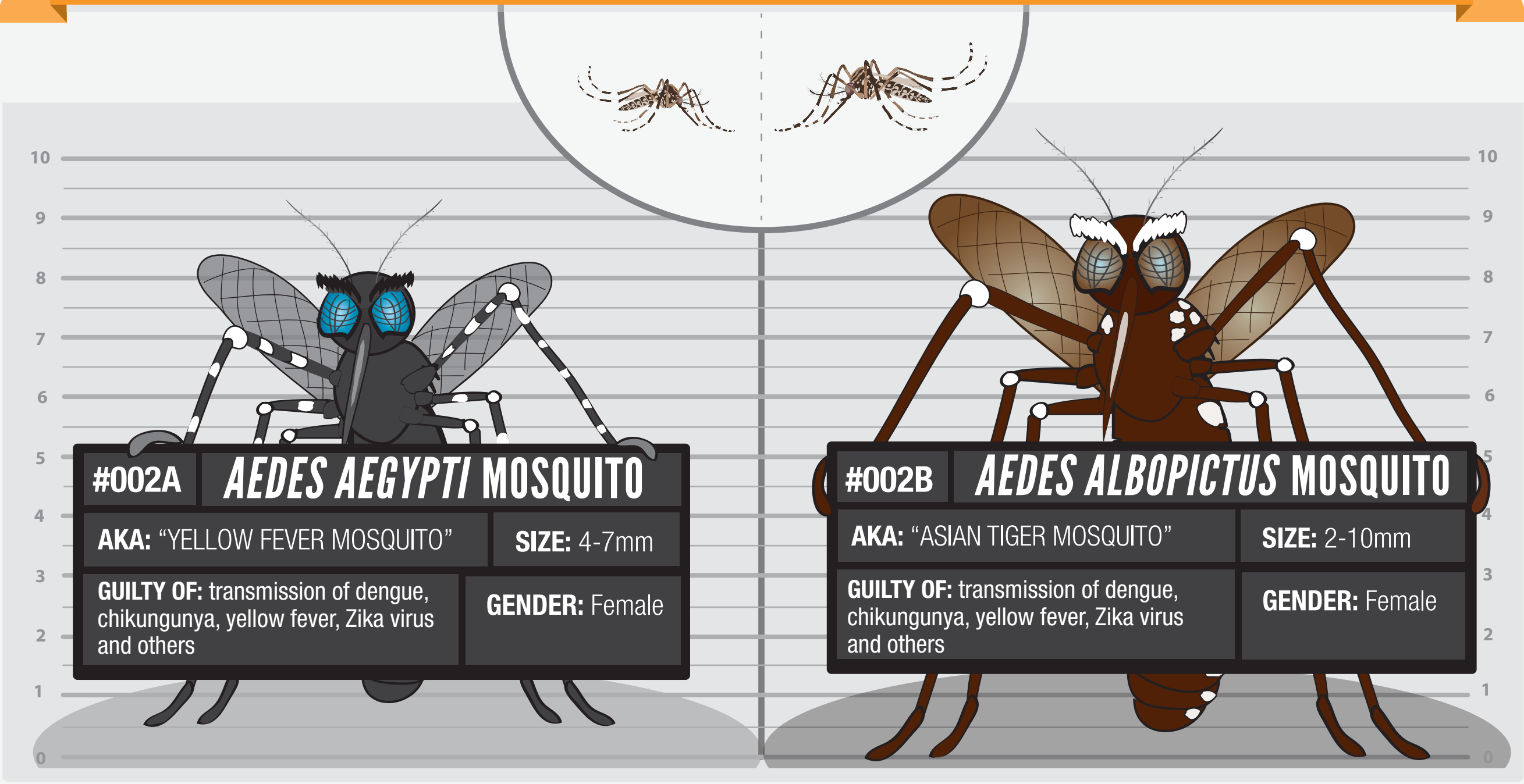


# USUAL SUSPECTS

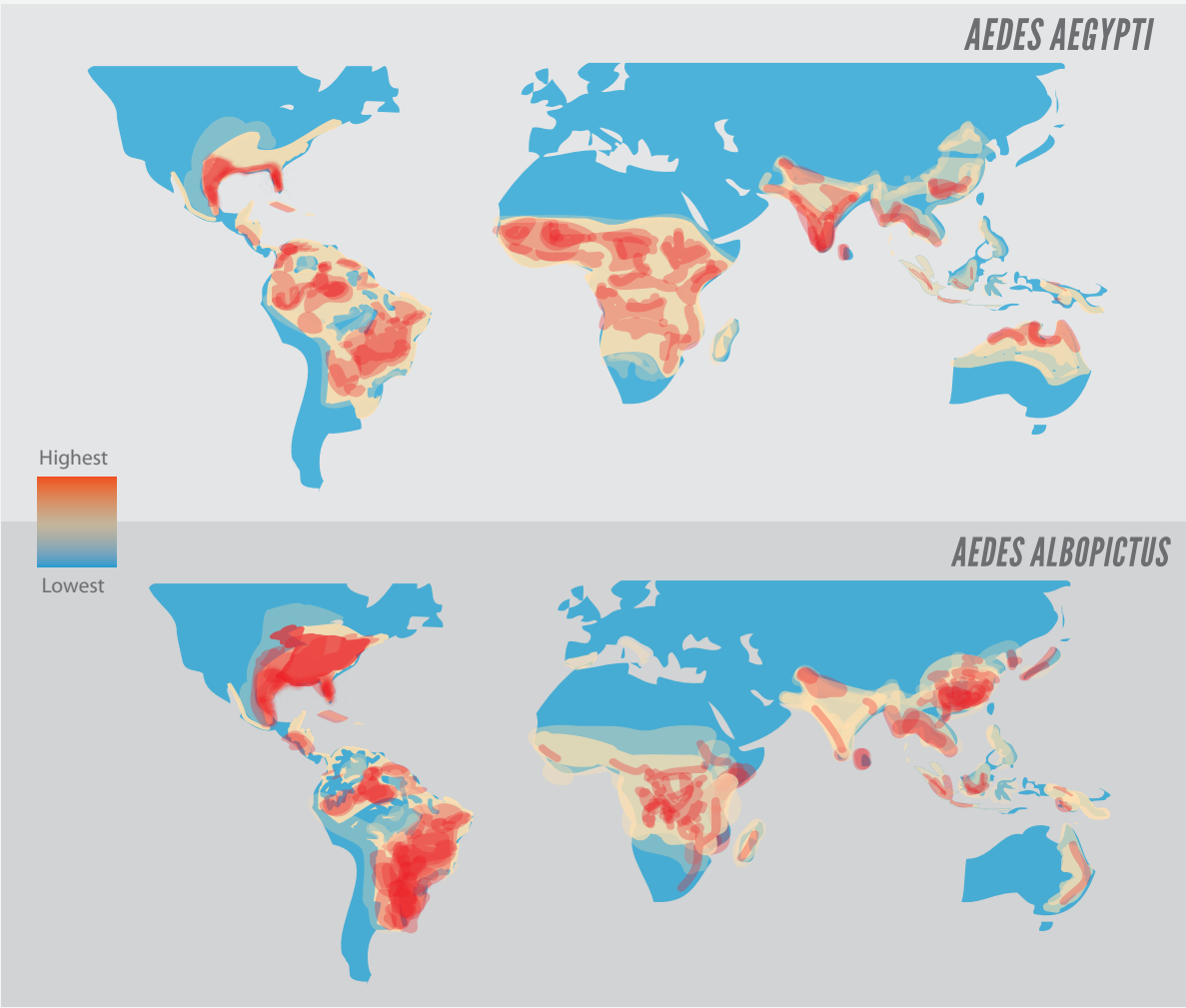
6 TINY VECTORS THAT REPRESENT A HUGE THREAT TO OUR HEALTH







## WHAT ARE THE CHARGES?

*AEDES* MOSQUITOS ARE RESPONSIBLE FOR  
**THE DEATH OF AT LEAST**  
**25K** PEOPLE EACH YEAR.


## WHERE DO THEY HANG AROUND?




## HABITS

<i>AEDES AEGYPTI</i>	<i>AEDES ALBOPICTUS</i>
 DIURNAL / CREPUSCULAR	 DIURNAL
 MOSTLY INDOORS	 MOSTLY OUTDOORS
SNEAKY BITER: BITES SEVERAL TIMES ADAPTED TO LIVE IN URBAN AREAS	AGGRESSIVE BITER: USUALLY BITES ONCE PERI-URBAN AND RURAL ENVIRONMENTS


## PREVENTION TIPS



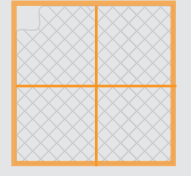
WEAR CLOTHES THAT  
COVER YOUR WHOLE BODY



USE MOSQUITO REPELLENT



EMPTY RECIPIENTS  
CONTAINING STANDING WATER



USE MOSQUITO NETS

## LIFE SPAN



## MOSQUITO FACTS

<i>AEDES AEGYPTI</i>	<i>AEDES ALBOPICTUS</i>
IT DISAPPEARED FROM THE MEDITERRANEAN	GLOBAL EXPANSION: THE MOST INVASIVE MOSQUITO SPECIES
40% OF THE WORLD'S POPULATION, AT RISK OF CONTRACTING DENGUE	ASSOCIATED WITH THICKETS AND ARBOREAL VEGETATION
IT FEEDS ALMOST EXCLUSIVELY ON HUMANS	FEEDS OPPORTUNISTICALLY (HUMANS, OTHER ANIMALS)
LESS DEPENDENT ON RAIN WATER THAN ITS COUSIN ANOPHELES	

FOR MORE INFORMATION: [WWW.ISGLOBAL.ORG/LA-CAIXA-CONTRA-LA-MALARIA](http://WWW.ISGLOBAL.ORG/LA-CAIXA-CONTRA-LA-MALARIA)