

7 THINGS

YOU'LL LEARN IN THE MASTER OF CLINICAL RESEARCH:
INTERNATIONAL HEALTH TRACK

1

THAT WE ARE CONTINUOUSLY **BUILDING THE EVIDENCE BASE FOR GLOBAL HEALTH.**



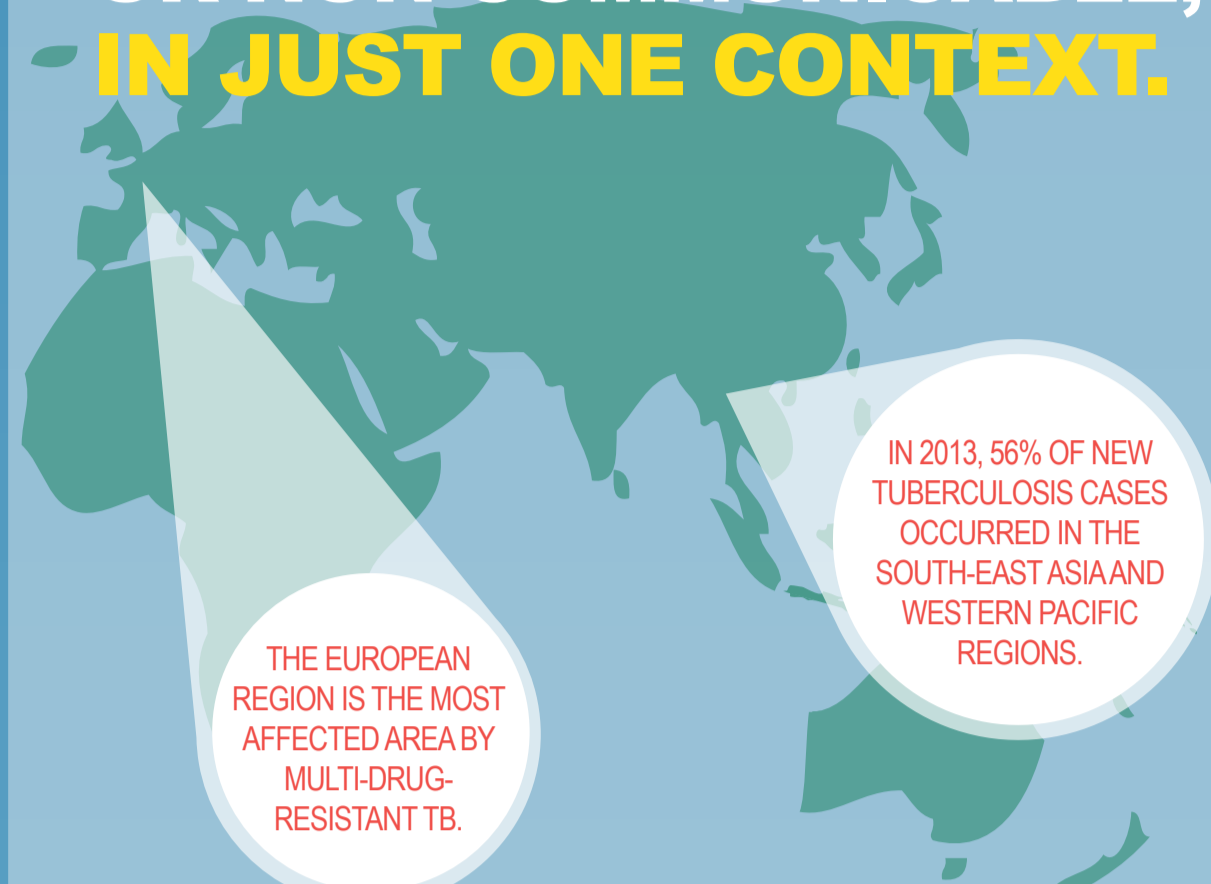
THERE IS NO SHORTAGE OF **RESEARCH CHALLENGES** FACING US TODAY, INCLUDING THE ADVANCEMENT OF HEALTH METRICS AND EVALUATION.

SOURCE: [HTTP://WWW.THELANCET.COM/JOURNALS/LANART/ARTICLE/PIIS0140-6736\(08\)60528-7/FULLTEXT](http://www.thelancet.com/journals/lanart/article/PIIS0140-6736(08)60528-7/fulltext)

2

THAT IT'S OFTEN

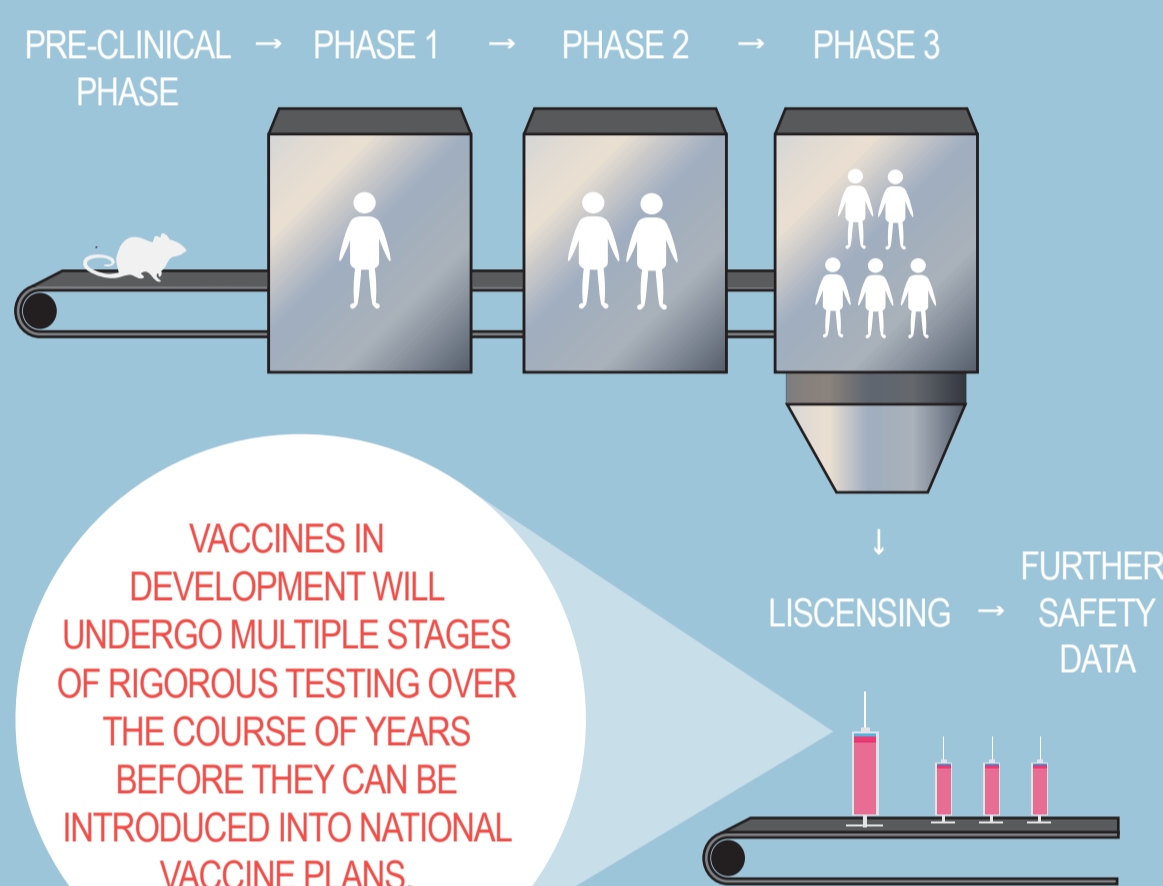
NOT ENOUGH TO STUDY A DISEASE, WHETHER COMMUNICABLE OR NON-COMMUNICABLE, **IN JUST ONE CONTEXT.**



SOURCE: [HTTP://WWW.EURO.WHO.INT/EN/MEDIACENTRE/SECTIONS/PRESS-RELEASES/2013/EACH-DAY-1000-PEOPLE-FALL-SICK-WITH-TUBERCULOSIS-IN-THE-EUROPEAN-REGION](http://www.euro.who.int/en/mediacentre/sections/press-releases/2013/each-day-1000-people-fall-sick-with-tuberculosis-in-the-european-region)

3

THAT EXISTING VACCINES **PREVENT THE DEATH OF 2.5 MILLION CHILDREN EVERY YEAR**



SOURCE: [HTTP://WWW.WHO.INT/IMMUNIZATION/GLOBAL_VACCINE_ACTION_PLANGVAP_INTRODUCTION_AND_IMMUNIZATION_LANDSCAPE_TODAY.PDF](http://www.who.int/immunization/global_vaccine_action_plan/gvap_introduction_and_immunization_landscape_today.pdf)

4

THAT **AIR POLLUTION** CAUSES MORE THAN **3 MILLION** PREMATURE DEATHS EVERY YEAR.



FACTORS LIKE CLIMATE CHANGE, CONTAMINATION, AND GREEN SPACES IMPACT OUR HEALTH. **GLOBAL HEALTH INCLUDES ENVIRONMENTAL HEALTH.**

SOURCE: [HTTP://WWW.WHO.INT/MEDIACENTRE/FACTSHEETS/FS313/EN/](http://www.who.int/mediacentre/factsheets/fs313/en/)

5

THAT THE RISK OF **MATERNAL MORTALITY** IS HIGHEST FOR MOTHERS UNDER 15 YEARS OF AGE – **A LEADING CAUSE OF DEATH FOR GIRLS IN DEVELOPING COUNTRIES.**



SOURCE: [HTTP://WWW.WHO.INT/MEDIACENTRE/FACTSHEETS/FS348/EN/](http://www.who.int/mediacentre/factsheets/fs348/en/)

6

THAT **LOW AND MIDDLE** INCOME COUNTRIES ARE HOME TO THE MAJORITY OF **PEOPLE WITH DIABETES.**



SOURCE: [HTTP://WWW.DIABETESRESEARCHCLINICALPRACTICE.COM/ARTICLE/S0168-8227\(11\)00691-2/FULLTEXT](http://www.diabetesresearchclinicalpractice.com/article/S0168-8227(11)00691-2/fulltext)

7

THAT CLINICAL AND PUBLIC HEALTH RESEARCHERS ARE **COMMUNICATORS TOO.**



RESEARCHERS MAKE USE OF ROBUST COMMUNICATIONS SKILLS —**WRITING, EDITING AND PRESENTATION**— TO ADVANCE THEIR WORK.

MASTER OF CLINICAL RESEARCH STUDENTS COME FROM DIVERSE BACKGROUNDS AND STUDIES, BUT THEY SHARE A COMMON DEDICATION TO BIOMEDICAL, CLINICAL AND PUBLIC HEALTH RESEARCH.

FOR MORE INFORMATION VISIT:

WWW.ISGLOBAL.ORG/TRAINING-PROGRAMMES

ISGlobal



Universitat de Barcelona