

7FACTS

ABOUT MALARIA VIVAX

1

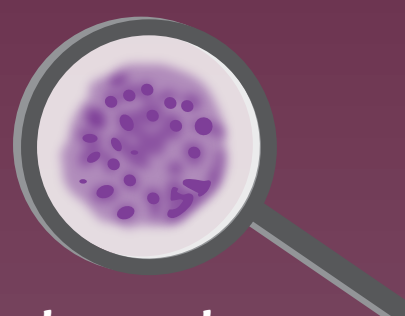
MALARIA CAUSED BY

THE PARASITE *PLASMODIUM VIVAX*

HAS HISTORICALLY BEEN A NEGLECTED DISEASE.

THERE ARE 5 SPECIES OF PARASITES THAT CAUSE MALARIA IN HUMANS:

- PLASMODIUM FALCIPARUM
- ***PLASMODIUM VIVAX***
- PLASMODIUM OVALE
- PLASMODIUM MALARIAE
- PLASMODIUM KNOWLESI



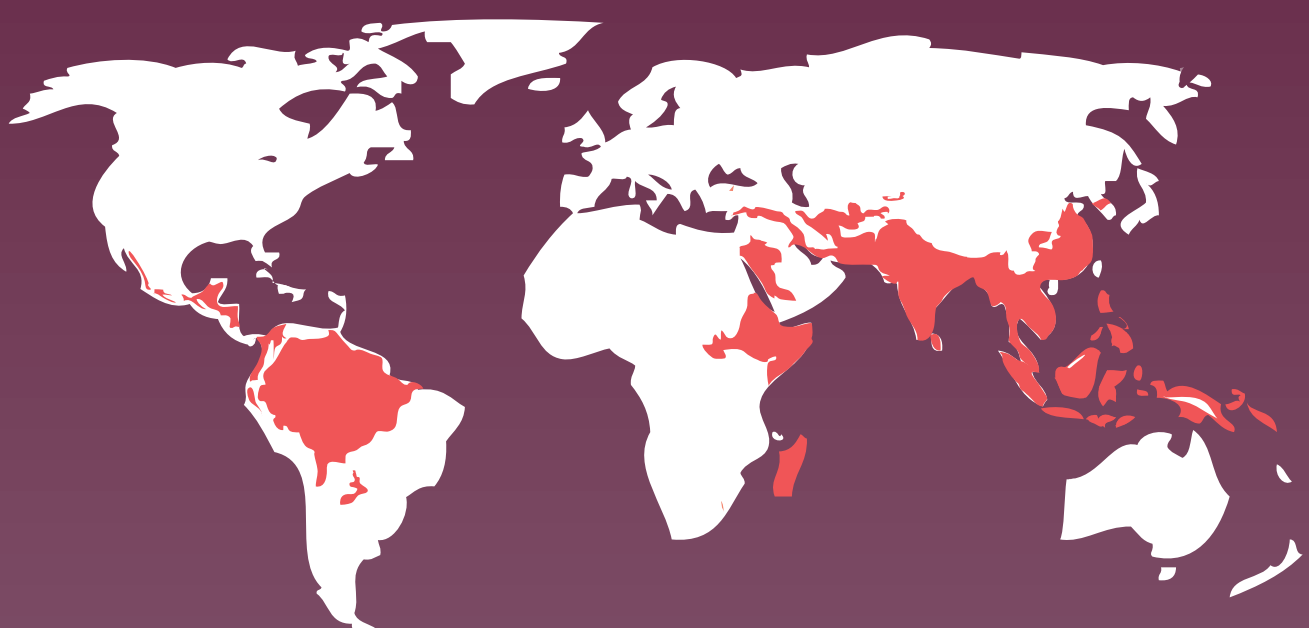
*is the second most
common cause of
malaria in humans*

2

P. VIVAX MALARIA HAS THE WIDEST

GEOGRAPHICAL DISTRIBUTION IN THE WORLD.

GLOBAL DISTRIBUTION OF MALARIA CAUSED BY *PLASMODIUM VIVAX* IN 2010



Source: Biological limits of the global distribution of *P. vivax* based on temperature, humidity, aridity, and contemporary reports of malaria risk. (Courtesy of Carlos Guerra, Malaria Atlas Project, Oxford University, United Kingdom.)

3

CONTRARY TO WHAT WAS ONCE BELIEVED

WE NOW KNOW THAT *P. VIVAX* ALSO CAUSES DEATH AND SEVERE DISEASE.

4

P. VIVAX

HAS DEVELOPED RESISTANCE TO CHLOROQUINE AND OTHER DRUGS.

CHLOROQUINE-RESISTANT *P. VIVAX*



● Fully susceptible ● > 90% susceptible ● 90% - 50% susceptible ● < 50% susceptible

Source: Resistance to therapies for infection by *Plasmodium vivax*. Baird JK. Clin Microbiol Rev. 2009 Jul;22(3):508-34. doi: 10.1128/CMR.00008-09. Review.

5

P. VIVAX

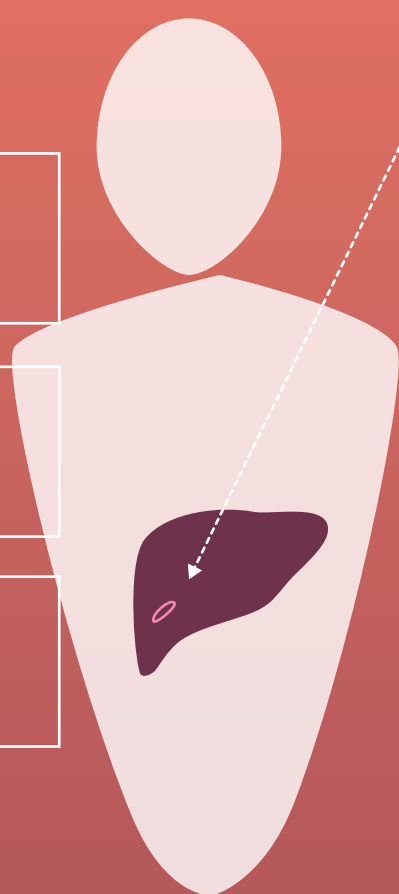
CAN LIE DORMANT IN THE LIVER FOR WEEKS, MONTHS AND EVEN YEARS

THIS LATENT FORM OF THE PARASITE,
CALLED THE HYPNOZOITE,
CAN CAUSE RELAPSE EVEN A LONG TIME AFTER INFECTION

RESPONSIBLE FOR A LARGE PART OF
THE DISEASE BURDEN OF *VIVAX*
MALARIA

ONE OF THE MAIN GAPS IN
KNOWLEDGE AND RESEARCH

A MAJOR OBSTACLE TO THE
ERADICATION OF MALARIA

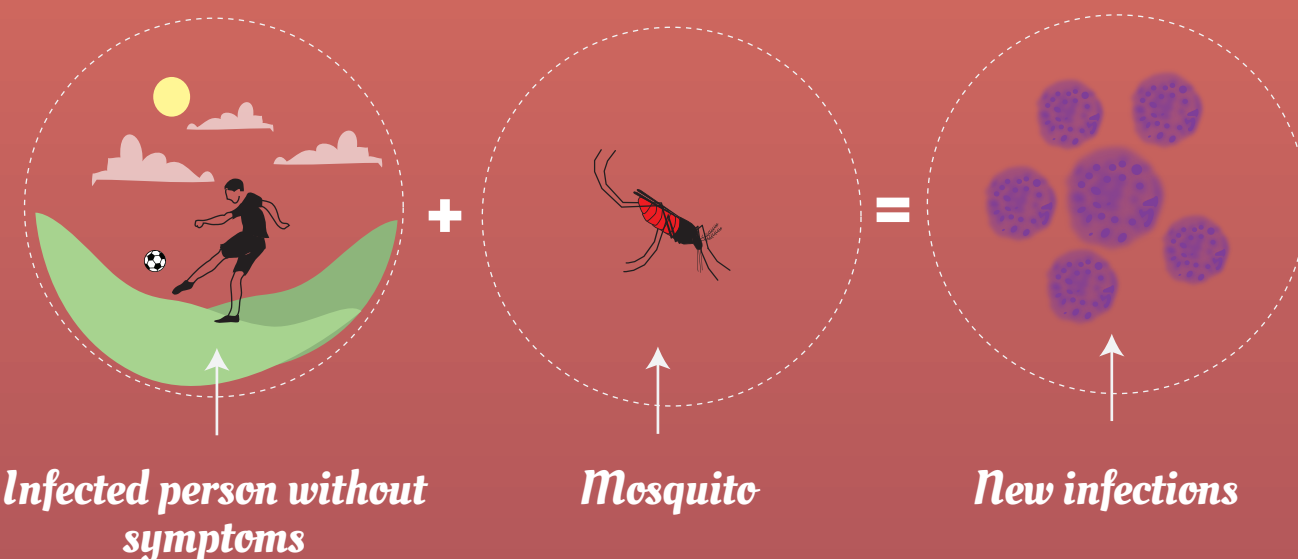


6

BLOOD STAGE PARASITES THAT TRANSMIT *P. VIVAX* MALARIA DEVELOP BEFORE CLINICAL SYMPTOMS APPEAR.

THEREFORE THE DISEASE

IS PROPAGATED BY APPARENTLY HEALTHY PEOPLE WHO ARE INFECTED.



7

P. VIVAX MALARIA RESEARCH IS EXTREMELY DIFFICULT

BECAUSE NO ONE HAS SUCCEEDED IN GROWING THE PARASITE IN THE LABORATORY.



*It will not be possible to eradicate malaria
until the problem of *P. vivax*
is properly addressed*