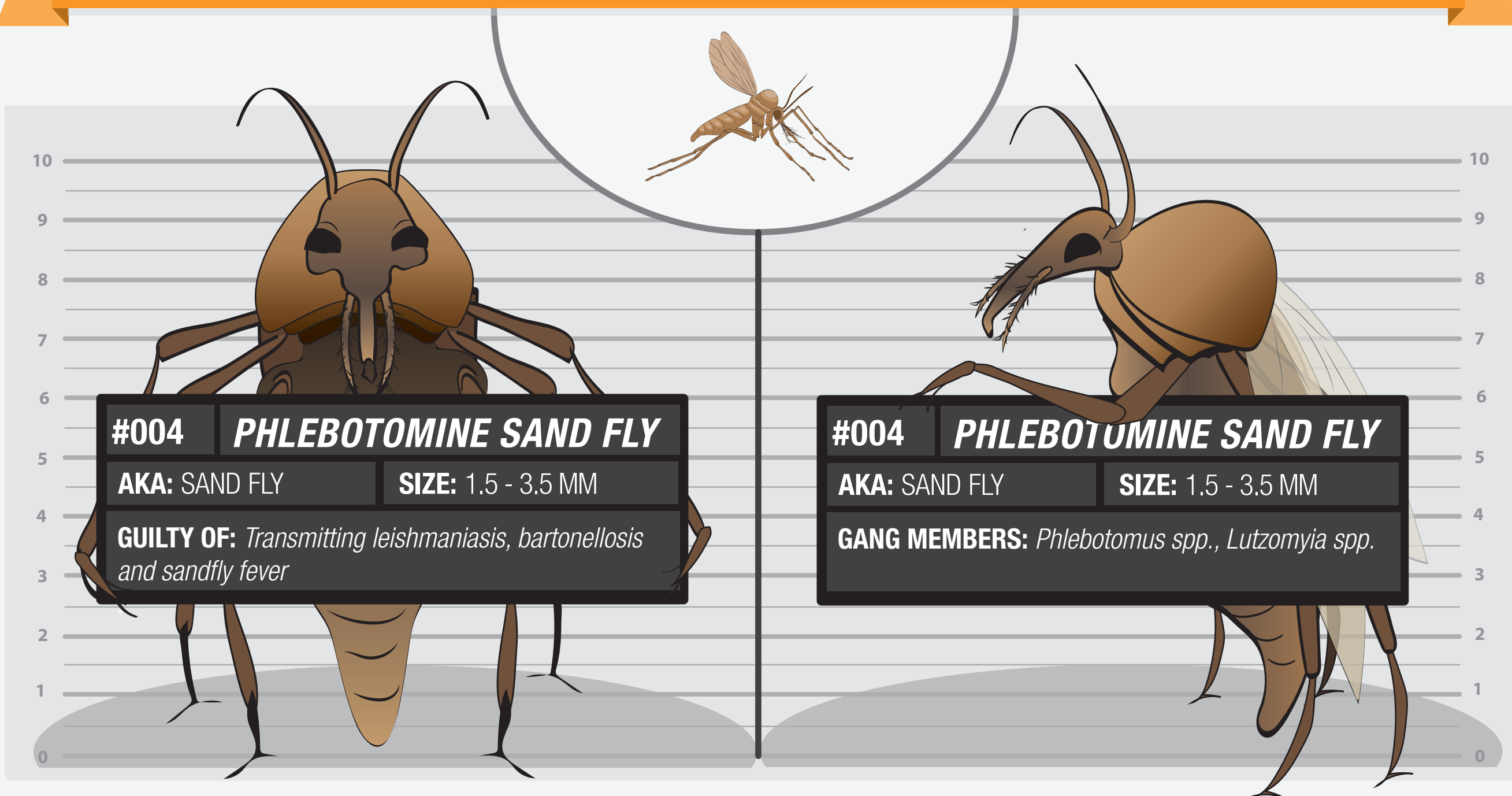


USUAL SUSPECTS

6 TINY VECTORS THAT REPRESENT A HUGE THREAT TO OUR HEALTH



WHAT ARE THE CHARGES?

THEY TRANSMIT
LEISHMANIA PARASITES TO HUMANS

LEISHMANIASIS CAUSES
20,000 TO 30,000 DEATHS
AND 900,000 TO 1,600,000 CASES IN HUMANS ANNUALLY

HABITS

MOST SPECIES FEED
OUTDOORS AT DUSK
AND AT NIGHT



OCCASIONALLY,
DAYTIME BITING
CAN OCCUR INDOORS



OPPORTUNISTIC ATTACKERS

THEY FEED ON ANIMALS TO WHICH THEY HAVE EASIEST
ACCESS SHOWING AN **OPPORTUNISTIC BEHAVIOUR**



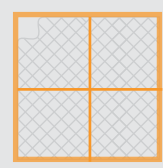
ABOUT **70 ANIMAL SPECIES** HAVE BEEN IDENTIFIED
AS **LEISHMANIA RESERVOIRS**

PREVENTION TIPS



WEAR CLOTHES THAT **COVER YOUR WHOLE BODY**

USE INSECT REPELLENTS **AT NIGHT WHEN SAND FLIES ARE ACTIVE**



USE **MOSQUITO NETS**

INSECTICIDE SPRAYING INSIDE AND AROUND
THE HOUSE. REMOVE POSSIBLE RESTING SITES



PROTECT YOUR DOGS WITH **REPELLENT COLLARS** AND MONITOR THEIR HEALTH

WHERE DO THEY HANG AROUND?

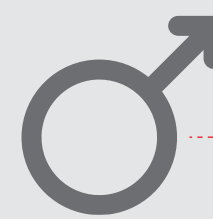


SAND FLIES THAT TRANSMIT HUMAN *LEISHMANIASIS*
CAN BE FOUND IN THE TROPICS AND TEMPERATE
REGIONS OF THE WORLD.

98 COUNTRIES ARE AFFECTED
WITH 350 MILLION PEOPLE LIVING AT RISK

BITING FLIES

MALES FEED ON
PLANT JUICES,

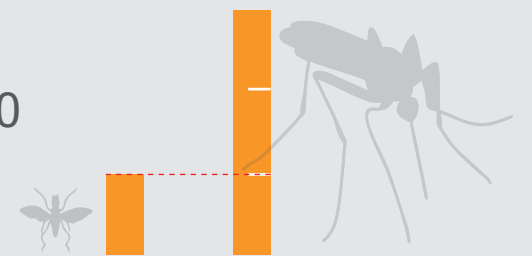


BUT FEMALES ALSO
BLOOD-FEED AND CAN TRANSMIT LEISHMANIASIS



SANDFLY FACTS

THEY ARE **ONE-THIRD THE LENGTH** OF A SMALL MOSQUITO



WEAK FLIERS. USUALLY THEY DON'T GO FURTHER THAN
300 M FROM THEIR BREEDING SITES



300 M



THEY LIVE IN TEMPERATE AND WARM REGIONS.
CLIMATE CHANGE MAY LEAD TO ITS EXPANSION



FROM THE 500 KNOWN SPECIES,
ONLY ABOUT 30 HAVE BEEN FOUND TO TRANSMIT LEISHMANIASIS



FOR MORE INFORMATION, VISIT: WWW.ISGLOBAL.ORG